

India Artefacts Box 2

Each object in the box has been photographed and a short description added to help you use the objects in a meaningful and culturally respectful way. Please check that all the objects shown below are in the box when you first collect it and that all the objects are returned, in good condition, at the end of the loan period. Some objects are fragile please treat with care. Any lost or damaged objects will be charged for.

CHECKLIST:

Total number of objects in box = 21



Lunch box

Made of metal with 2 fasteners, 2 compartments for different food and a handle. Used by children to take hot food to school



Toy kitchen set – 12 pieces

Full set of equipment including toy 2-ring stove



Crisp packet

Made and sold in India, other flavours include Masala and Spicy paprika



Wooden musical instruments

India bamboo flute. The bamboo flute is one of the oldest Indian instruments. A favourite of popular music, it has only recently been used for classical music.

(only 1 flute is included in this box)

Please return all articles to Centre for Global Education York,
York St John University, Lord Mayor's Walk, York YO31 7 EX.

Tel: 01904 876755

email: cge@yorks.ac.uk



A wooden painted figure of a musician, playing harmonium, part of a set of five musicians from Rajasthan, North India.



Shopping bag

Ganesh the elephant god is depicted on this canvas bag. Many towns and cities are trying to stop using plastic bags and replace them with re-useable and environmentally friendly bags



Patterned cushion cover

Illustrates intricate stitching and appliqué



Girl's clothes – 3 pieces



Sari

The Sari is the most popular form of dress for many Indian women. They come in many different patterns. The material is wrapped around and then tucked in at the waist. The sari is usually worn over a petticoat with a low-cut, short-sleeved, midriff-baring blouse known as a choli forming the upper garment.



Bindi

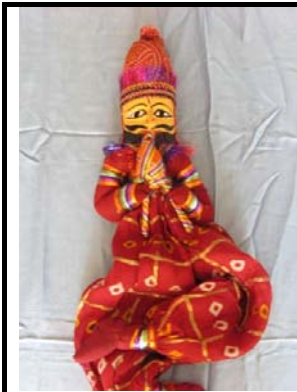
It is a forehead decoration worn in South Asia and Southeast Asia. Traditionally it is a dot of red color applied in the centre of the forehead close to the eyebrows, but it can be a piece of jewellery



Toy Auto Rickshaw or tuk-tuk

This is a very popular form of urban transport in India. It is a motorized version of the traditional rickshaw, a small two- or three-wheeled cart pulled by a person. There are also cycle rickshaws

The body is metal; 3 small wheels - 1 in front, 2 behind; a small cabin for the driver (called an *auto-wallah* in some areas) and seating for three with no doors or seatbelts. It is not uncommon to see 6-8 passengers. There may be a meter but the fare is usually agreed by bargaining. The battery powered green auto rickshaw is much more environmentally friendly than the petrol-run black and yellow ones.



Puppet

Musician puppet from Rajasthan in North India made of wood and cloth.

Indian Puppets are looked upon as divine manifestations by the puppeteers and the puppet makers alike. When they are made, they are given good or bad characters, which come to life on stage..

They are used to depict real life and tell meaningful stories.



Chapati Roller

Chapati is a type of bread eaten in South Asia. It is made from dough of atta flour, water and salt. The chapati roller is used to roll the dough out into discs of approximately 12cm in diameter and browning the discs on the both sides on a very hot, dry tava or frying pan.



Traditional Steel Thali

This is a traditional Stainless Steel Thali Set you find at Indian restaurants and all over India.

It is durable, easy to wash, and considered cleaner (*pavitra*) than ceramic and glass, as it does not have a porous surface where food and germs can hide.



Indian bangles. - 10

In India, the custom of wearing bangles by women is centuries old. Bangles are made of silver, gold, wood, glass, and plastic, among other materials.

Married Hindu women always wear gold bangles teamed with glass bangles. Folklore says that gold bangles herald prosperity and well-being for husbands.



Garland

Used to welcome guests and in many religious celebrations.



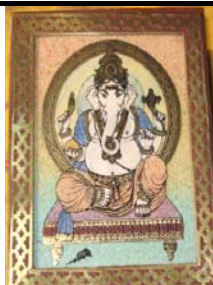
Indian Currency

The rupee (Hindi: रुपया) is the currency of India.

Please note these are in a small woven purse.



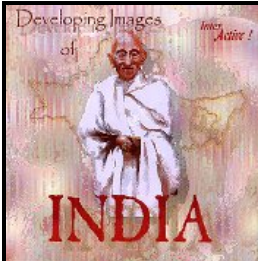
Silver Musician



Wooden jewellery box, handcrafted, with brass panel inlays and embossed lid. On the lid is depicted the image of the popular Hindu deity Ganesh, the Elephant god. He is worshipped as the god of education, knowledge, of wisdom and wealth, of success and the destroyer of evils. He sits on a gilded throne with the figure of a mouse.



THE NATIONAL FLAG OF INDIA is in tricolour (TIRANGA) of deep saffron (Kesari) at the top, white in the middle and dark green at the bottom in equal proportions. In the centre of the white band, there is a wheel in navy blue to indicate the Dharma Chakra, the wheel of law This centre symbol or the 'CHAKRA', is a Buddhist symbol dating back to 200th century BC. Its diameter approximates the width of the white band and it has 24 spokes, which intends to show that there is life in movement and death in stagnation. The saffron stands for courage, sacrifice and the spirit of renunciation; the white, for purity and truth; the green for faith and fertility. The flag symbolizes freedom



Developing Images' CD-Rom for use in KS2 & KS3
Produced by GlosDEC this DVE has a series of stunning photographic images from India and includes background information, classroom activities and curriculum links.